

## Mr Shot<sup>™</sup> Collection Data and Installation Sheet

- Materials** Spun Metal, Timber, Plastic, Steel, Paint
- Suspension** Single ES E27 Ceramic Lampholder, Suspension Cables and Harp, Ceiling Canopy and Electrical Flex
- Dimensions** Mr Short Shot = 340 Ø x 400 H (mm), Mr Big Shot = 340 Ø x 550 H (mm)
- Lamp Type** 240 Volt: Single ES E27 Lamp

**Max. 24 Watt PAR38 Compact Fluorescent / Max. 57 Watt Eco Halogen / Max. 12 Watt LED.**

**Check lamp type for suitability with dimming. Please ensure lamps are purchased from quality lamp manufacturers such as Philips or Osram. Low quality lamps may not perform as well.**

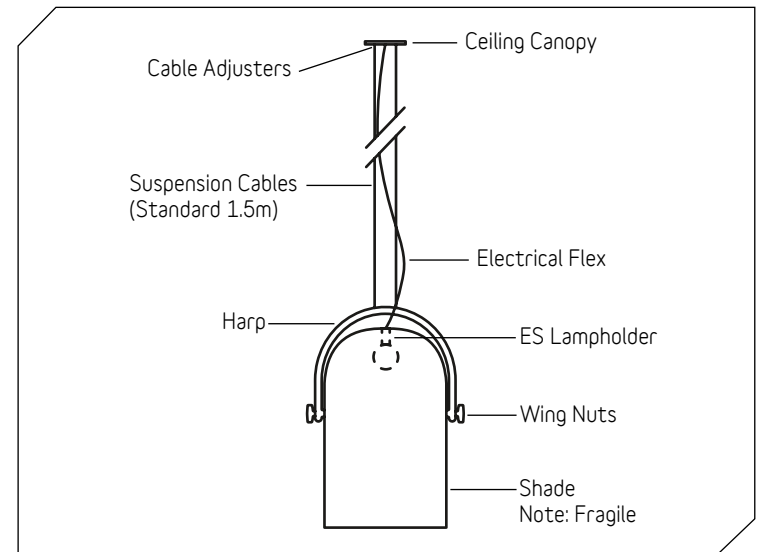
Lamps not included. Frosted, warm colour temperature, decorative lamps recommended. To change lamps, always switch off power to light fitting, then unscrew lamp from lampholder and replace with same type. Make sure lamps are secured into lampholder prior to light operation.

### Installation

- Be extremely careful when handling the pendant shade as materials are delicate and can scuff easily. Before removing shade from packing box, please check if shade is strapped to the base of the box. Use two hands and leave protective plastic cover on shade while preparing for installation.  
**DO NOT stack the shades once they are unpacked from their boxes, as the weight of the stack will damage the shade walls.**
- Slide low profile canopy cover plate down flex. Trim electrical flex (allowing additional slack for pitching of shade) and suspension cables to approximate length. Feed crimped end through top of Mr Shot timber harp, so that the crimped end is below the top of the harp. Slide suspension cables through cable adjusters, located on ceiling canopy. With two people, (one to hold the pendant in position,) wire three core electrical flex and mains flex into ceiling bracket junction box. **Ensure both electrical flex and ceiling plate are correctly earthed to mains earth.** Once three core flex is wired, secure ceiling plate to ceiling with appropriate screws, using the various fixing holes available to suit site specific needs. Slide canopy cover plate back up flex and secure to back plate using earth magnets supplied. Ensure the cord grip and cable adjusters on canopy have been re-tightened after making adjustment.
- With two people (one to hold the pendant in place), wire in three core electrical flex to ceiling bracket terminal block. **Ensure ceiling bracket and pendant electrical flex are correctly earthed to mains earth.** Slide canopy up the flex to meet the bracket and fix with metal screws on the side of the canopy. Once attached, tighten central cord grip on the ceiling canopy cover securely.
- If you need to lower or raise the pendant, unscrew top thread/nipple two to three turns on the cable adjuster, push in adjuster barrel on cable adjuster to allow cable to slide through. The suspension cable needs to be under tension and remove weight from the central flex, which must be slack. Please make sure adjuster cap is tightened after adjustment and trim off excess suspension cable once adjusted.
- If you need to angle the shade, loosen two wing nuts on either side of harp to allow shade to pitch freely. Once at desired pitch angle, re-tighten wing nuts securely onto pendant shade.  
**Ensure even pressure has been applied to both sides of the harp to avoid warping the shade.**
- Do not apply force to shades or fixture and remember to remove protective plastic cover prior to turning on.

### Important Safety Instructions

- Please ensure all installation steps are conducted by certified electrical contractors.
- Lit lamps are extremely hot! Use switch or plug when turning light fitting on or off.
- You must turn off power to fitting and allow lamp to cool down before replacing. Only switch power on once lamp is secured into lampholder.
- Keep fixture away from flammable objects or materials that may burn.
- Remove dust and insects from lamp and surfaces regularly.

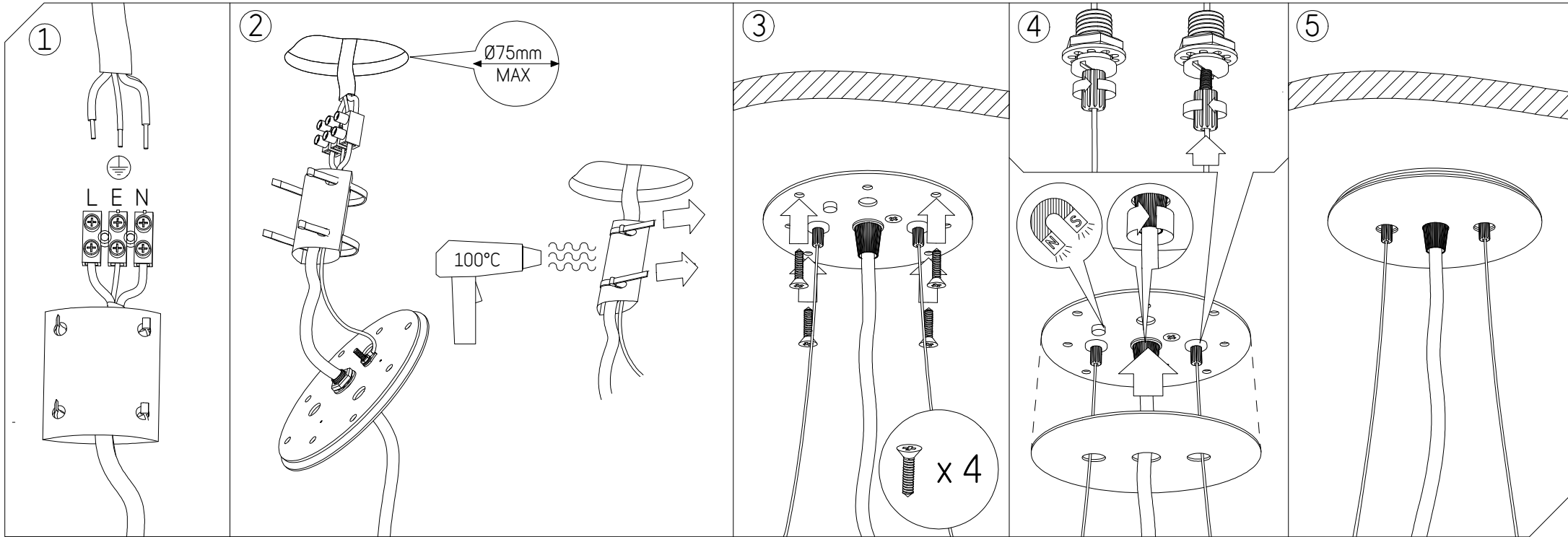


Please contact Satelight if you have any questions regarding the steps included in this data sheet. As this luminaire can be customised, installation details may vary from this standard data sheet. Install in conjunction with your delivery docket.

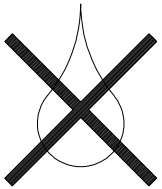
- Cleaning**
- Do not use abrasive cleaning materials on fixture. Do not wipe fitting surfaces with wet cloth. Dust only.
  - Please be aware that the shade materials are delicate and can scuff or mark easily.



# Installation - Suspension Ceiling Canopy - 2 Suspension Cables/Wires



Must be installed by certified electrical contractors only



Clean with dry cloth only.

