

READ THIS DATA SHEET CAREFULLY PRIOR TO COMMENCING ANY INSTALLATION OF LIGHT FITTINGS

Symbol_™ Collection Data and Installation Sheet (Symbol 440 Pendant)

Materials Brushed Brass, Patina Black, Plastic, Aluminium

Suspension Single ES E27 Lampholder, 120mm Dia. Low Profile Ceiling Canopy and Electrical Flex

Dimensions 440 Diameter X 600 High (mm)

Lamp Type **Max. 15 Watt Compact Fluorescent / Max. 42 Watt Eco Halogen Lamps / Max. 10 Watt LED.**

Check lamp type for suitability with dimming. Please ensure lamps are purchased from quality lamp manufacturers such as Philips or Osram. Low quality lamps may not perform as well. Check lamp type for suitability with dimming.

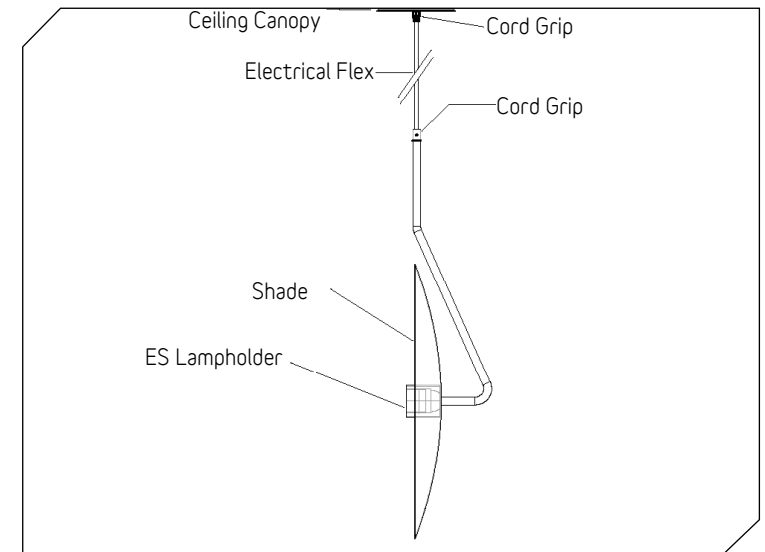
Lamps not included. Decorative, warm colour temperature lamps recommended. To change lamps, always switch off power to light fitting, then unscrew lamp from lampholder and replace with same type. Make sure lamps are secured into lampholder prior to light operation.

Installation

- 1 Wear gloves when installing and handling this fitting. Be extremely careful when handling the pendant as brass materials are delicate and can scuff easily. Before removing shade from packing box, please check if shade is strapped to the base of the box. Use two hands and only pick up the shade from the central wires, as the brass components of the shade are very delicate and will mark easily. Please leave protective plastic cover on shade while preparing for installation. **DO NOT stack the pendants once they are unpacked from their boxes, as the weight of the stack will damage and mark the fragile brass components. Always place pendant FACE DOWN if resting on a surface.**
- 2 Slide low profile canopy cover plate down flex. Trim electrical flex to approximate length and feed through cord grip, located on the low profile ceiling plate. Wire three core electrical flex and mains flex into ceiling bracket junction box. **Ensure ceiling plate is correctly earthed to mains earth.** Once three core flex is wired, secure ceiling plate to ceiling with appropriate screws, using the various fixing holes available to suit site specific needs. Slide canopy cover plate back up flex and secure to back plate using the magnet supplied. Ensure the cord grip on canopy has been re-tightened after making adjustment.
- 3 If you need to lower or raise the pendant, slightly unscrew the cord grip on the ceiling canopy and adjust the height by moving flex up or down. Please make sure cord grip is tightened after adjustment. The pendant direction can be adjusted by the cord grip on top of the brass rod. Use a flat head screw driver to loosen cord grip by one or two turns. Holding the brass rod, twist the flex to appropriate direction.
- 4 Do not apply force to shades or fixture and remember to remove protective plastic cover prior to turning on.

Important Safety Instructions

- Please ensure all installation steps are conducted by certified electrical contractors.
- Lit lamps are extremely hot! Use switch or plug when turning light fitting on or off.
- You must turn off power to fitting and allow lamp to cool down before replacing. Only switch power on once lamp is secured into lampholder.
- Keep fixture away from flammable objects or materials that may burn.
- Remove dust and insects from lamp and surfaces regularly.



Please contact Satelight if you have any questions regarding the steps included in this data sheet.

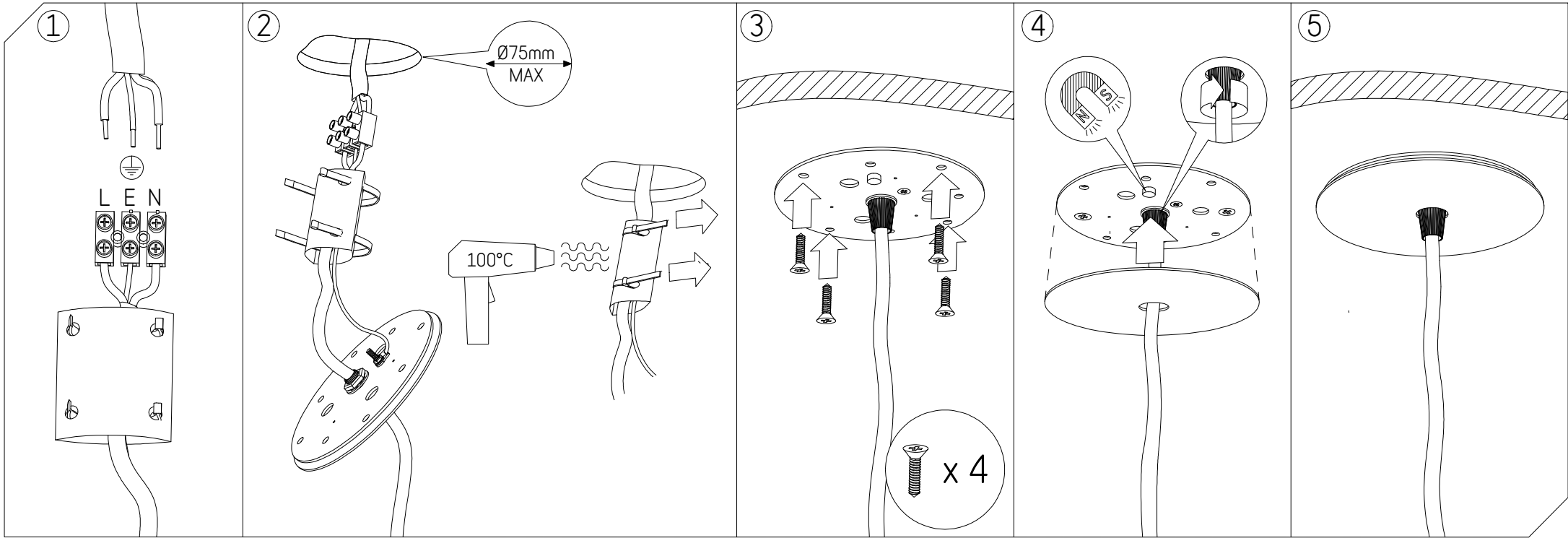
Cleaning • Do not use abrasive cleaning materials on fixture. Do not wipe fitting surfaces with wet cloth. Dust only.

• Please be aware that the shade materials are delicate and can scuff or mark easily.

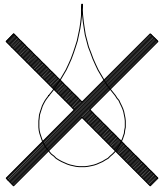
Satelight Design Pty Ltd
www.satelight.com.au
96 Hudsons Road, Spotswood Vic. 3015, Australia
Telephone +61 3 9399 5805
© Copyright Satelight Design Pty Ltd



Installation - Suspension Ceiling Canopy



Must be installed by certified electrical contractors only



Clean with dry cloth only.

