

READ THIS DATA SHEET CAREFULLY PRIOR TO COMMENCING ANY INSTALLATION OF LIGHT FITTINGS

## Lavalier Collection Data and Installation Sheet (Lavalier Ceramic)

Materials	Brushed brass, plastic, metal, ceramic
Suspension	Single ES E27 Lampholder, 120mm Dia. Low Profile Ceiling Canopy and Electrical Flex
Dimensions	Ceramic: 150 Dia. x 280 H (mm)
Lamp Type	240 Volt: Single ES E27 Lamp

**Max. 15 Watt Compact Fluorescent / Max. 28 Watt Eco Halogen / Max. 8 Watt LED. Large fancy round recommended. Check lamp type for suitability with dimming. Please ensure lamps are purchased from quality lamp manufacturers such as Philips or Osram. Low quality lamps may not perform as well.**

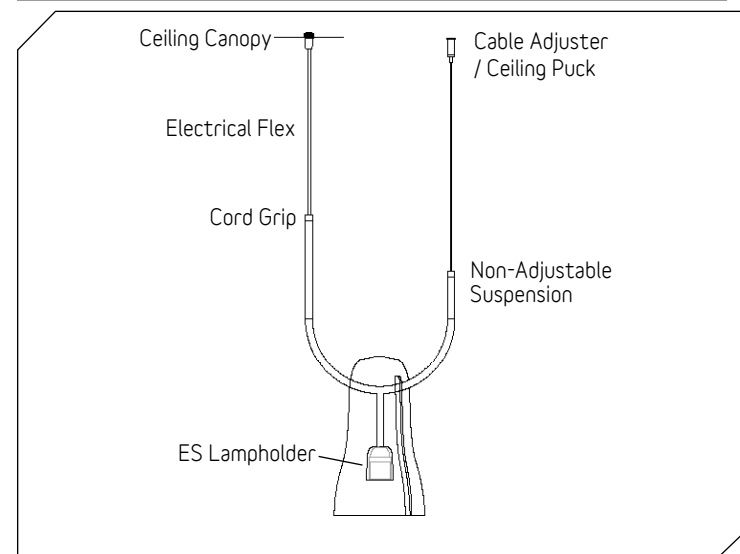
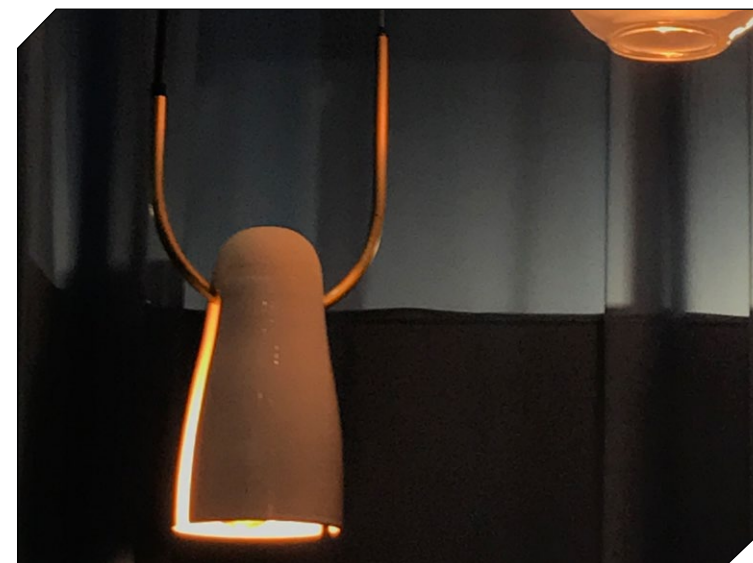
Lamps not included. Warm colour temperature, decorative lamps recommended. To change lamps, always switch off power to light fitting, then unscrew lamp from lampholder and replace with same type. Make sure lamps are secured into lampholder prior to light operation.

### Installation

1. Wear gloves when installing and handling this fitting. Be extremely careful when handling the pendant as brass materials are delicate and can scuff easily, the hand made ceramic part is extremely FRAGILE. Before removing fitting from packing box, please check if fitting is strapped to the base of the box. Use two hands and only pick up the shade from the central wires, as the brass components of the shade are very delicate and will mark easily. Please leave protective plastic cover on fitting while preparing for installation.  
**DO NOT stack the pendants once they are unpacked from their boxes, as the weight of the stack will damage and mark the fragile brass component and ceramic piece. Always place pendant DOWN if resting on a surface.**
2. Slide low profile canopy cover plate down flex. Trim electrical flex to approximate length and feed through cord grip, located on the low profile ceiling plate. Wire three core electrical flex and mains flex into ceiling bracket junction box. **Ensure ceiling plate is correctly earthed to mains earth.** Once three core flex is wired, secure ceiling plate to ceiling with appropriate screws, using the various fixing holes available to suit site specific needs. Slide canopy cover plate back up flex and secure to back plate using the magnet supplied. Ensure the cord grip on canopy has been re-tightened after making adjustment. Pre drill a M3 hole in the ceiling, which is 250mm away from the centre of the ceiling canopy (Refer to supplied template). The ceiling puck and cable adjuster will need to be secured into this predrilled hole. Please note that this gives control as to how the pendant will face in the environment.
3. If you need to lower or raise the pendant, slightly unscrew the cable adjuster, adjust the suspension cable by putting pressure on the cable adjuster and sliding the cable through. Please make sure cable adjuster is tightened after adjustment. The flex height can also be adjusted by slightly unscrewing the cord grip on the ceiling canopy and pushing or pulling the flex through. Please tighten after making adjustment.
4. Once the brass component is correctly wired and secured to the ceiling, carefully place the ceramic piece over the brass rod. Be careful to not touch the top third of the ceramic piece as the matte finish can mark easily. Please note that this piece will sit in place using gravity.
5. Do not apply force to shades or fixture and remember to remove protective plastic cover prior to turning on.

### Important Safety Instructions

- Please ensure all installation steps are conducted by certified electrical contractors.
- Lit lamps are extremely hot! Use switch or plug when turning light fitting on or off.
- You must turn off power to fitting and allow lamp to cool down before replacing. Only switch power on once lamp is secured into lampholder.
- Keep fixture away from flammable objects or materials that may burn.
- Remove dust and insects from lamp and surfaces regularly.



Please contact Satelight if you have any questions regarding the steps included in this data sheet.

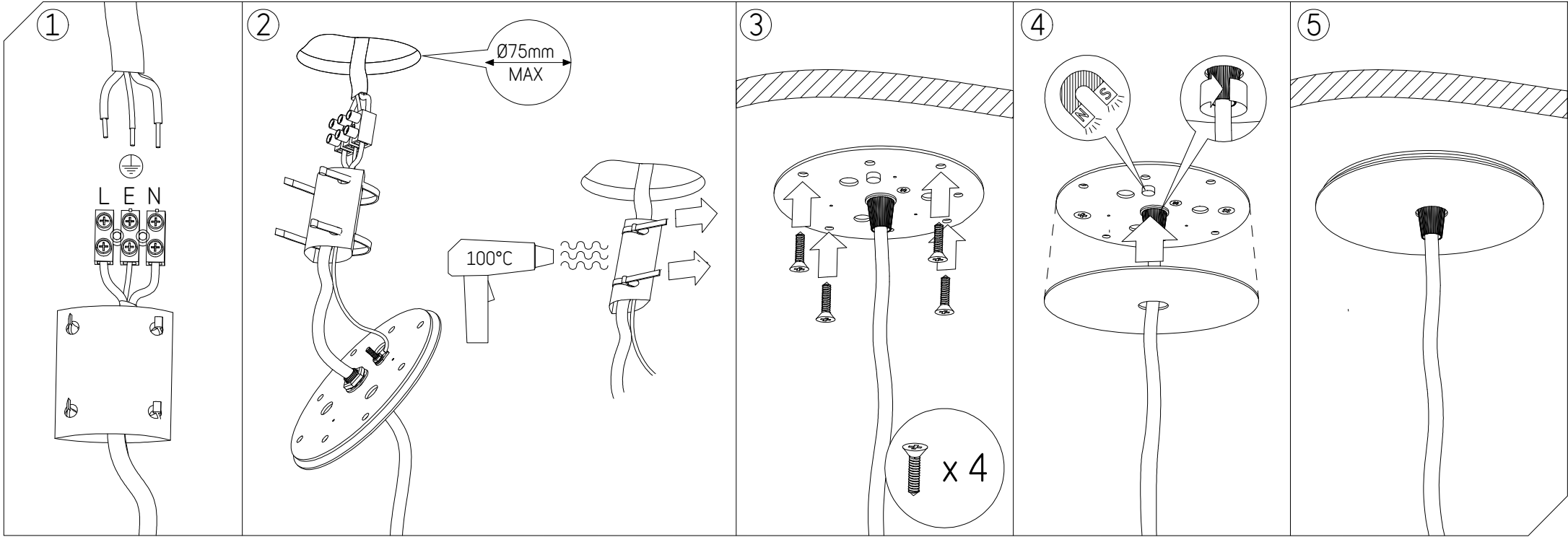
**Cleaning** • Do not use abrasive cleaning materials on fixture. Do not wipe fitting surfaces with wet cloth. Dust only.

• Please be aware that the shade materials are delicate and can scuff or mark easily.

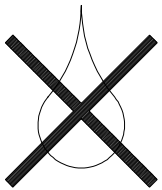
Satelight Design Pty Ltd  
www.satelight.com.au  
96 Hudsons Road, Spotswood Vic. 3015, Australia  
Telephone: +61 3 9599 5805  
© Copyright Satelight Design Pty Ltd



# Installation - Suspension Ceiling Canopy



Must be installed by certified electrical contractors only

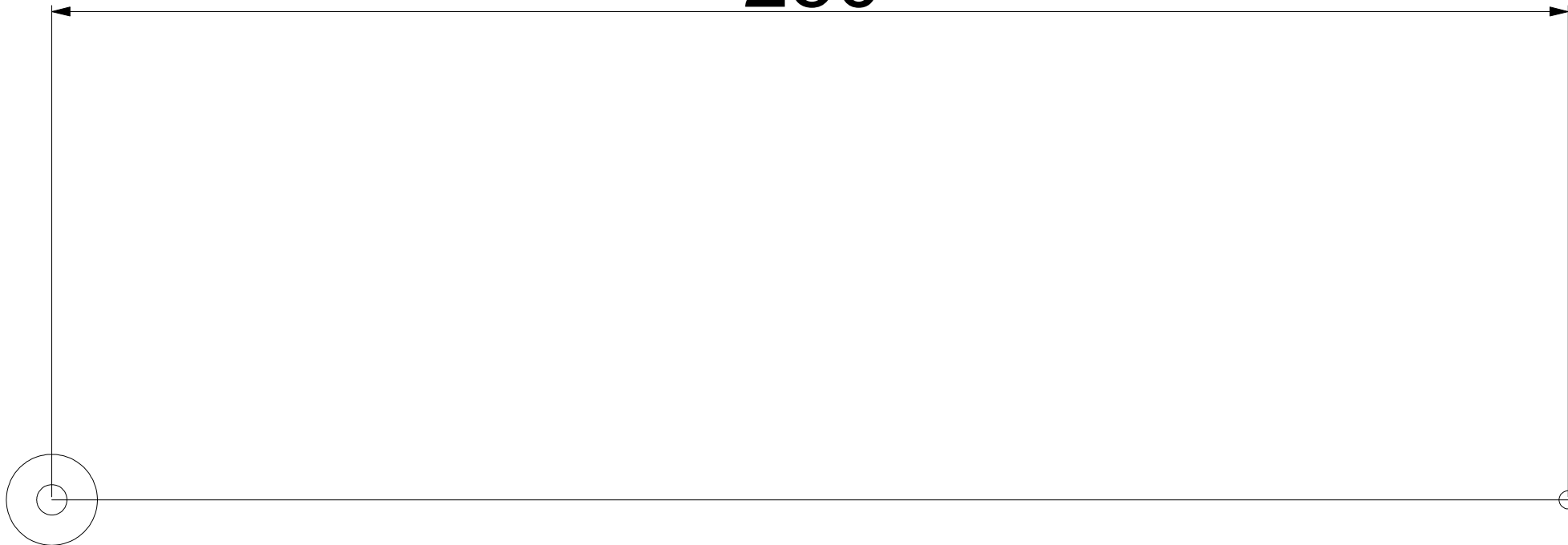


Clean with dry cloth only.



## Lavalier Collection Data and Installation Sheet Template (Lavalier Ceramic)

250



Centre of electrical flex on ceiling canopy

Centre of pre-drilled M3 hole for ceiling puck and  
cable adjuster

Please contact Satelight if you have any questions  
regarding the steps included in this data sheet.



READ THIS DATA SHEET CAREFULLY PRIOR TO COMMENCING ANY INSTALLATION OF LIGHT FITTINGS

## Lavalier Collection Data and Installation Sheet (Lavalier Glass)

Materials	Brushed brass, plastic, metal, glass
Suspension	Single ES E27 Lampholder, 120mm Dia. Low Profile Ceiling Canopy and Electrical Flex
Dimensions	Glass: 220 Dia. x 190 H (mm)
Lamp Type	240 Volt: Single ES E27 Lamp

Max. 15 Watt Compact Fluorescent / Max. 28 Watt Eco Halogen / Max. 8 Watt LED. Large fancy round recommended. Check lamp type for suitability with dimming. Please ensure lamps are purchased from quality lamp manufacturers such as Philips or Osram. Low quality lamps may not perform as well.

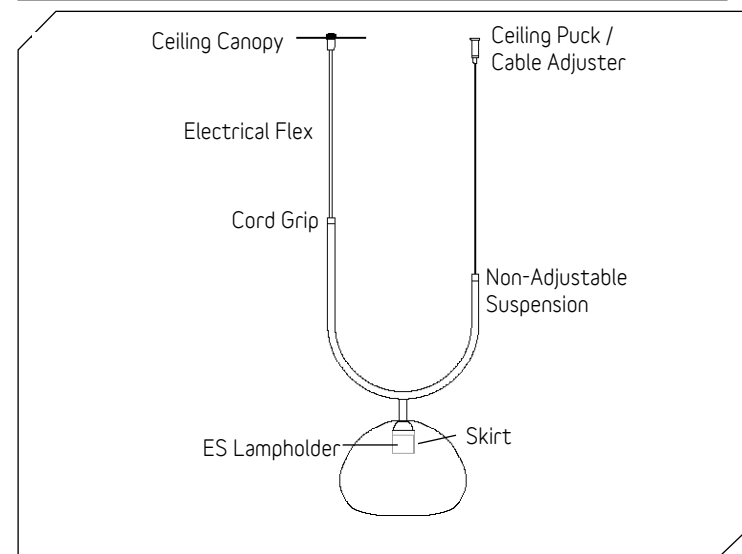
Lamps not included. Warm colour temperature, decorative lamps recommended. To change lamps, always switch off power to light fitting, then unscrew lamp from lampholder and replace with same type. Make sure lamps are secured into lampholder prior to light operation.

### Installation

- 1 Wear gloves when installing and handling this fitting. Be extremely careful when handling the pendant as brass materials are delicate and can scuff easily, the hand made glass piece is extremely FRAGILE. Before removing fitting from packing box, please check if fitting is strapped to the base of the box. Use two hands and only pick up the fitting from the central wires, as the brass components of the fitting are very delicate and will mark easily. Please leave protective plastic cover on fitting while preparing for installation.  
**DO NOT stack the pendants once they are unpacked from their boxes, as the weight of the stack will damage and mark the fragile brass component and ceramic piece. Always place pendant DOWN if resting on a surface.**
- 2 Slide low profile canopy cover plate down flex. Trim electrical flex to approximate length and feed through cord grip, located on the low profile ceiling plate. Wire three core electrical flex and mains flex into ceiling bracket junction box. **Ensure ceiling plate is correctly earthed to mains earth.** Once three core flex is wired, secure ceiling plate to ceiling with appropriate screws, using the various fixing holes available to suit site specific needs. Slide canopy cover plate back up flex and secure to back plate using the magnet supplied. Ensure the cord grip on canopy has been re-tightened after making adjustment. Pre drill a M3 hole in the ceiling, which is 250mm away from the centre of the ceiling canopy (Refer to supplied template). The ceiling puck and cable adjuster will need to be secured into this predrilled hole. Please note that this gives control as to how the pendant will face in the environment.
- 3 If you need to lower or raise the pendant, slightly unscrew the cable adjuster, adjust the suspension cable by putting pressure on the cable adjuster and sliding the cable through. Please make sure cable adjuster is tightened after adjustment. The flex height can also be adjusted by slightly unscrewing the cord grip on the ceiling canopy and pushing or pulling the flex through. Please tighten after making adjustment.
- 4 Once the brass component is correctly wired and secured to the ceiling, carefully hold up the glass piece to the E27 lampholder. Lock in place by screwing the skirts supplied onto the E27 lampholder.
- 5 Do not apply force to shades or fixture and remember to remove protective plastic cover prior to turning on.

### Important Safety Instructions

- Please ensure all installation steps are conducted by certified electrical contractors.
- Lit lamps are extremely hot! Use switch or plug when turning light fitting on or off.
- You must turn off power to fitting and allow lamp to cool down before replacing. Only switch power on once lamp is secured into lampholder.
- Keep fixture away from flammable objects or materials that may burn.
- Remove dust and insects from lamp and surfaces regularly.

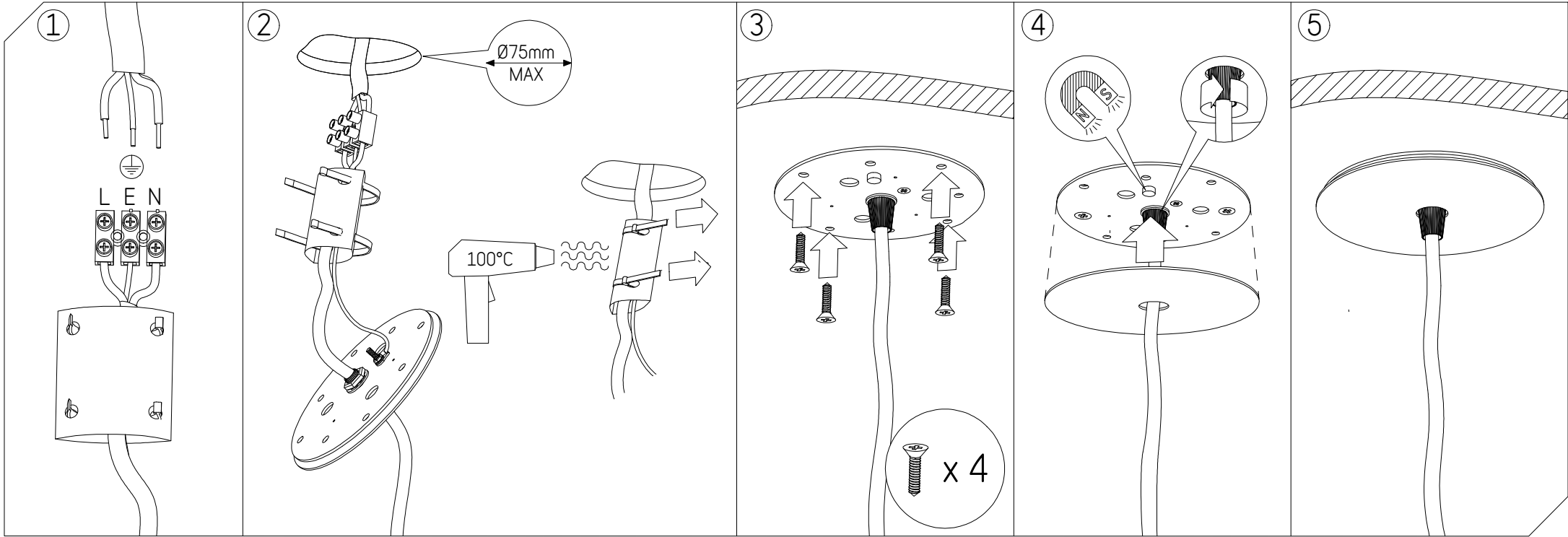


Please contact Satelight if you have any questions regarding the steps included in this data sheet.

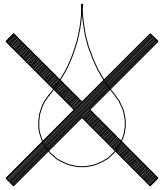
Satelight Design Pty Ltd  
www.satelight.com.au  
96 Hudsons Road, Spotswood Vic. 3015 Australia  
Telephone +61 3 9399 5800  
© Copyright Satelight Design Pty Ltd



# Installation - Suspension Ceiling Canopy



Must be installed by certified electrical contractors only

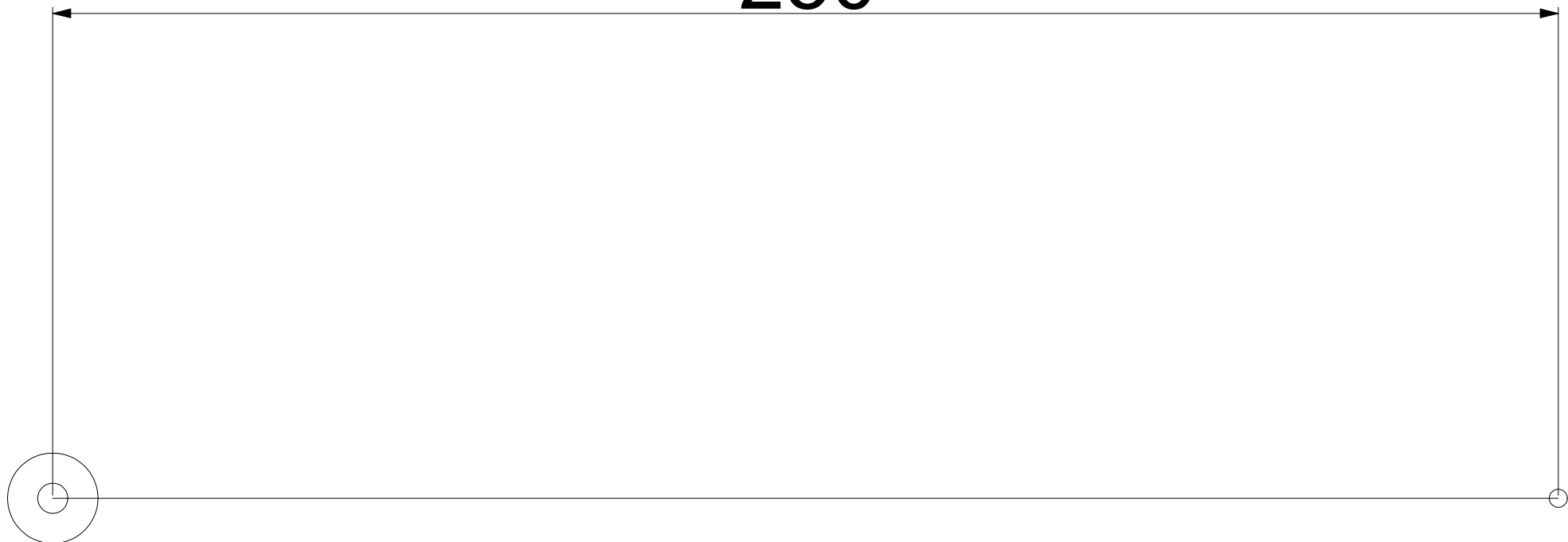


Clean with dry cloth only.



## Lavalier Collection Data and Installation Sheet Template (Lavalier Ceramic)

250



Centre of electrical flex on ceiling canopy

Centre of pre-drilled M3 hole for ceiling puck and cable adjuster

Please contact Satelight if you have any questions regarding the steps included in this data sheet.

