

READ THIS DATA SHEET CAREFULLY PRIOR TO COMMENCING ANY INSTALLATION OF LIGHT FITTINGS

Icarus[™] Collection Data and Installation Sheet (LED Lamp Disk)

Materials Cotton/Material, Stainless Steel, Steel, Paint

Suspension LED Lamp Disk, Suspension Cables, 120mm Dia. Low Profile Ceiling Canopy and Electrical Flex

Dimensions From 600 Ø to 1000 Ø; From 300 H to 400 H (mm)

Lamp Type 1 x LED 34 Watt Disk ONLY.

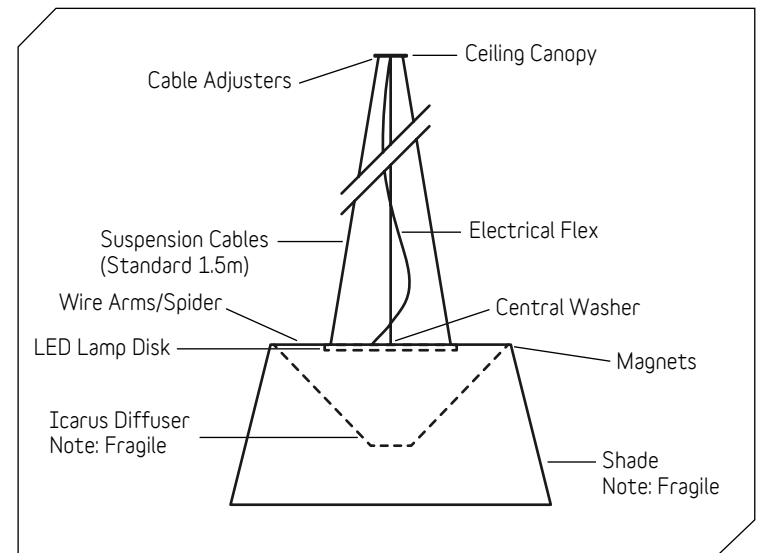
Check lamp type for suitability with dimming with which ever system has been specified. Please ensure replacement lamps are purchased from quality lamp manufacturers such as Tridonic Atco. Low quality lamps may not perform as well and may not be compatible. To change LED disk, always switch off power to light fitting AT THE MAINS, unscrew bolts from fixing points and replace with same type LED lamp disk. **Warning: Ensure work and light fitting area is free of static prior to installation. Disk MUST only be serviced by certified electrical contractor.**

Installation

- 1 Be extremely careful when handling the pendant shade as materials are delicate and can scuff easily. Before removing shade from packing box, please check if shade is strapped to the base of the box. Use two hands and only pick up the shade from the central wires, as the walls of the shade are very fragile and will dent easily. Please leave protective plastic cover on shade while preparing for installation.
DO NOT stack the shades once they are unpacked from their boxes, as the weight of the stack will damage and crush the fragile lampshade walls and always place shade spider DOWN if resting on a surface.
- 2 Using the Satelight cut-out template, cut out hole in ceiling to allow for LED driver to be placed into ceiling cavity. Connect 5 Core or 3 Core electrical flex from mains into LED Driver. (5 Core for Dimmable / 3 Core for Non-Dimmable.)
- 3 Trim pendant flex to approximate length required, allowing some length for final adjustment and feed through ceiling canopy plate and cover plate. Slide stainless steel cables through back plate so that the crimped ends are above the back plate. Once in place, attach lamp disk to shade using supplied wing nut and washer assembly. Attach suspension cables through cable adjusters, located around the outer edge of the LED Lamp Disk.
- 4 Once fed through, with two people, one to hold the pendant lampshade in place, wire pendant flex into LED Driver. Taking careful note of the (+) and (-) terminals. Once wired, attach cord grip onto driver and position in cavity.
- 5 Install ceiling canopy back plate over hole in ceiling with appropriate screws. Slide decorative cover plate up flex and onto base plate using supplied magnets. The slots in the decorative plate allow for the suspension cables to pitch to their required position below.
- 6 If you need to lower or raise the pendant, unscrew top thread/nipple two to three turns on the cable adjuster, push in adjuster barrel on cable adjuster to allow cable to slide through. The suspension cables need to be under tension and remove weight from the central flex, which must be slack. Please make sure adjuster cap is tightened after adjustment and trim off excess suspension cable once adjusted.
- 7 Position Icarus diffuser inside pendant so that the two magnets locate onto shade spider in two even positions. Ensure diffuser is sitting evenly inside shade and is centered around the LED lamp disk.
- 8 Do not apply force to shades or fixture and remember to remove protective plastic cover prior to turning on.

Important Safety Instructions

- Please ensure all installation steps are conducted by certified electrical contractors.
- Lit lamps are extremely hot! Use switch or plug when turning light fitting on or off.
- You must turn off power to fitting and allow lamp to cool down before replacing. Only switch power on once lamp is secured into lampholder.
- Keep fixture away from flammable objects or materials that may burn.
- Remove dust and insects from lamp and surfaces regularly.

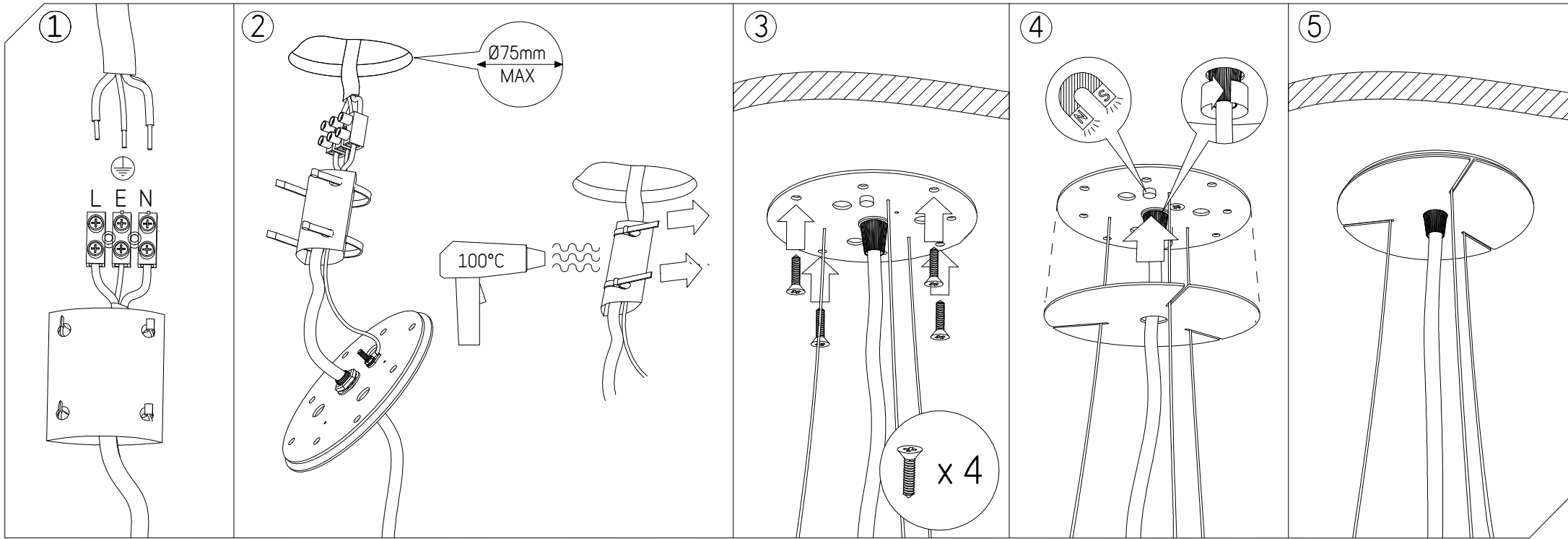


Please contact Satelight if you have any questions regarding the steps included in this data sheet. As this luminaire can be customised, installation details may vary from this standard data sheet. Install in conjunction with your delivery docket.

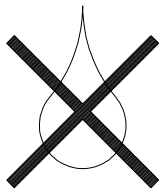
- Cleaning**
- Do not use abrasive cleaning materials on fixture. Do not wipe fitting surfaces with wet cloth. Dust only.
 - Please be aware that the shade materials are delicate and can scuff or mark easily.



Installation - Suspension Ceiling Canopy - 3 Suspension Cables/Wires



Must be installed by certified electrical contractors only



Clean with dry cloth only.

