

## Flare<sup>™</sup> Collection Data and Installation Sheet (Single ES)

Materials	Copper, Timber, Plastic, Steel, Paint
Suspension	Single ES E27 Lampholder, 120 mm Dia. Low Profile Ceiling Canopy and Electrical Flex
Dimensions	155 Ø x 175 H (mm)
Lamp Type	240 Volt: Single ES E27 Lamp

Max. 15 Watt Compact Fluorescent / Max. 42 Watt Eco Halogen / Max. 10 Watt LED / Max. 25w Carbon Filament Lamp. Check lamp type for suitability with dimming. Please ensure lamps are purchased from quality lamp manufacturers such as Philips or Osram. Low quality lamps may not perform as well.

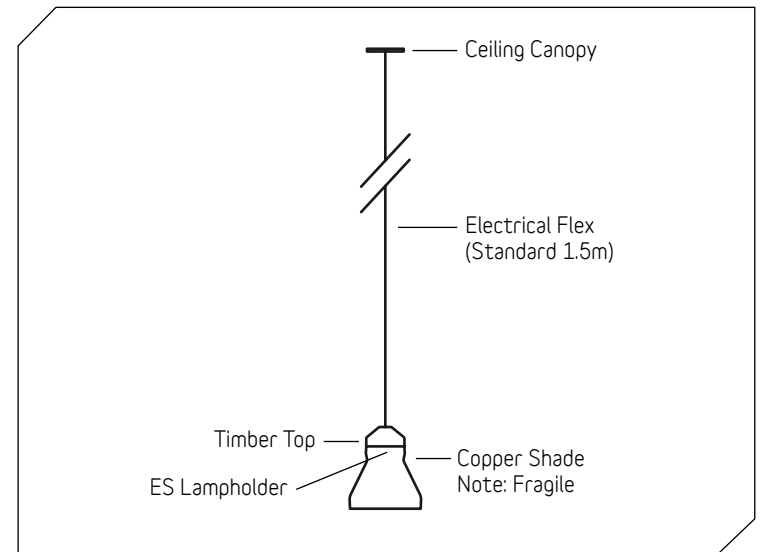
Lamps not included. Frosted, warm colour temperature, decorative lamps recommended. To change lamps, always switch off power to light fitting, then unscrew lamp from lampholder and replace with same type. Make sure lamps are secured into lampholder prior to light operation.

### Installation

- 1 Be extremely careful when handling the pendant shade as materials are delicate and can scuff easily. Please leave protective plastic cover on shade while preparing for installation.  
**DO NOT stack the shades once they are unpacked from their boxes, as the weight and edges of the stack will damage and scratch the copper and timber surfaces.**
- 2 Ensure copper shade is placed above lampholder assembly, so that the ring around the lampholder allows the copper shade and timber top to sit in place. Slide low profile canopy cover plate down flex. Trim electrical flex to approximate length and feed through cord grip, located on the low profile ceiling plate. Wire electrical flex and mains flex into ceiling bracket junction box. Ensure ceiling plate is correctly earthed to mains earth. Once flex is wired, secure ceiling plate to ceiling with appropriate screws, using the various fixing holes available to suit site specific needs. Slide canopy cover plate back up flex and secure to back plate using earth magnets supplied. Ensure the cord grip has been re-tightened after making adjustment.
- 3 Do not apply force to shades or fixture and remember to remove protective plastic cover prior to turning on.

### Important Safety Instructions

- Please ensure all installation steps are conducted by certified electrical contractors.
- Lit lamps are extremely hot! Use switch or plug when turning light fitting on or off.
- You must turn off power to fitting and allow lamp to cool down before replacing. Only switch power on once lamp is secured into lampholder.
- Keep fixture away from flammable objects or materials that may burn.
- Remove dust and insects from lamp and surfaces regularly.

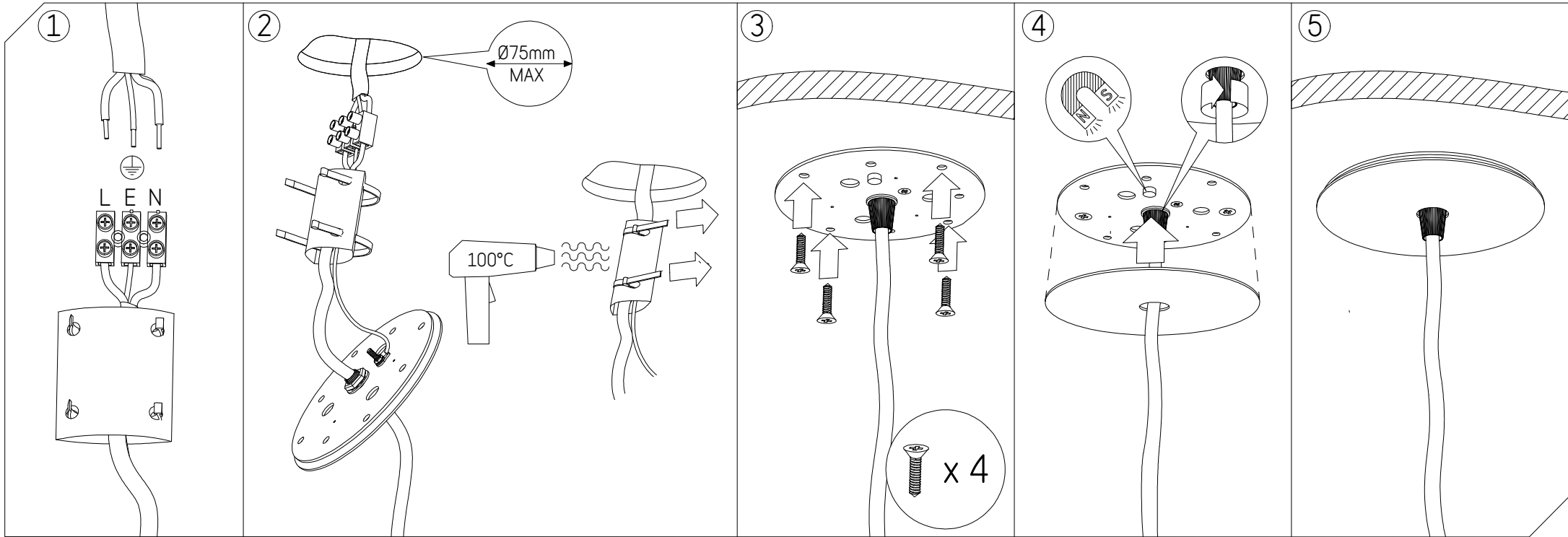


Please contact Satelight if you have any questions regarding the steps included in this data sheet. As this luminaire can be customised, installation details may vary from this standard data sheet. Install in conjunction with your delivery docket.

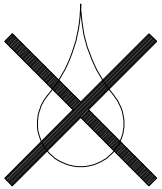
- Cleaning**
- Do not use abrasive cleaning materials on fixture. Do not wipe fitting surfaces with wet cloth. Dust only.
  - Please be aware that the shade materials are delicate and can scuff or mark easily.



# Installation - Suspension Ceiling Canopy



Must be installed by certified electrical contractors only



Clean with dry cloth only.

